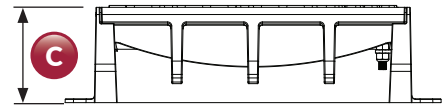
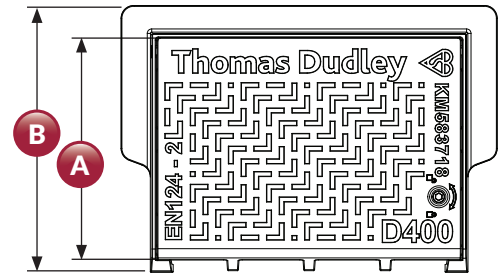
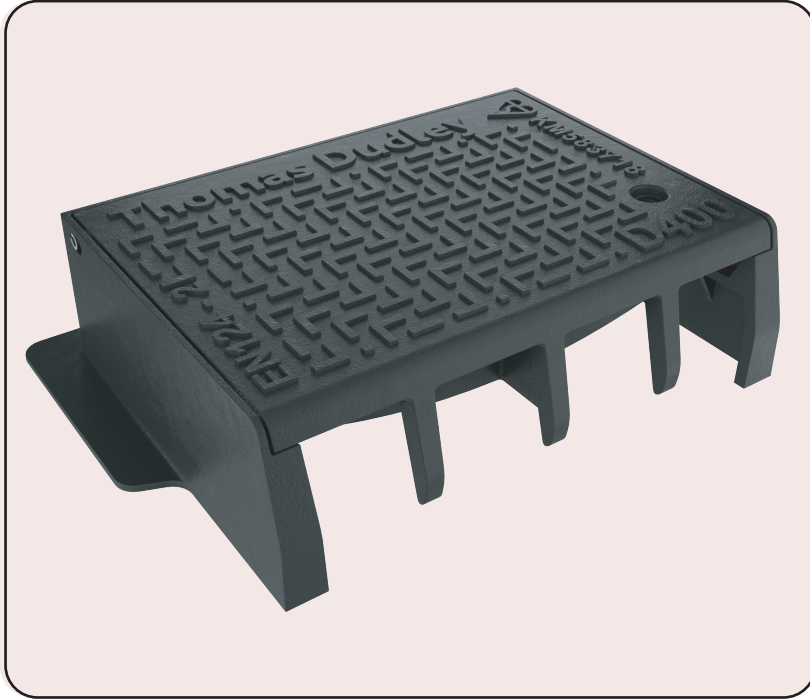




D400KM DUCTILE IRON 500mm HB Kerbdrain



KEY FEATURES



COMPLIES WITH
EN 124-2



OPTIONAL
LOCKING



SUITS CLASS
D400 APPLICATIONS



SLIP RESISTANT TREAD
PATTERN

BENEFITS

- Complies fully with EN 124-2:2015 - suitable for intensity of traffic in D400 applications
- Engineered from quality assured ductile iron
- HB Kerb profile
- Available in locked and non-locked versions

CLEAR OPENING (A) MM	OVER FRAME (B) MM	PROFILE	FLANGE DESIGN	DEPTH (C) MM	LOCK	STYLE	CODE
480 x 350	592 x 420	HB	3 - SIDE	150	YES	FLAT	372347
480 x 350	592 x 420	HB	3 - SIDE	150	NO	FLAT	371399